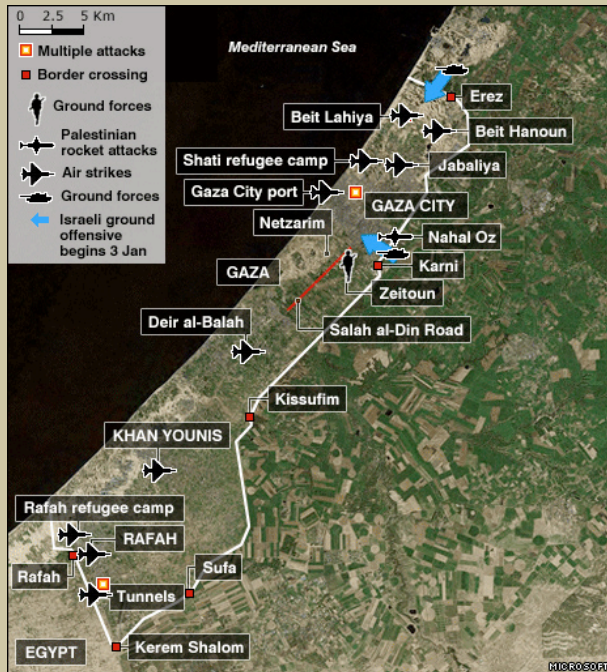


**GAZA MAP OF ISRAELI OFFENSIVE  
"OPERATION CAST LEAD"**



[BBC map]

**CURRENT SITUATION**

- More than a million Gazans still have no electricity or water and thousands have fled their homes for safe shelter
- Hospitals are unable to provide adequate intensive care to the high number of casualties
- 75% of Gaza's electricity has been cut off
- Hospital electricity is being provided by back-up generators
- There is an urgent need to evacuate patients out of Gaza
- There is urgent need for more neuro-vascular, orthopaedic and open heart surgeons
- UNRWA has opened 11 shelters for 5,000 displaced persons
- Gaza's water and sewerage system is on the verge of collapse due to the lack of power and fuel
- Over 530,000 people are entirely cut off from running water, and the rest are receiving water only intermittently
- The sewage situation is highly dangerous, posing serious risks of the spread of water-borne diseases
- Movement of humanitarian aid and food distributions continue to be difficult due to the dangerous situation on the ground

[United Nations Office for the Co-ordination of Humanitarian Affairs]

# GAZA GHETTO

## Israel's Palestine Experiment

Prepared by Sonja Karkar  
for Australians for Palestine  
and Women for Palestine  
[www.australiansforpalestine.com](http://www.australiansforpalestine.com)

For more information please contact:

Australians for Palestine  
PO Box 2209 Hawthorn 3122  
Tel: (03) 9818 5080

Email: [info@australiansforpalestine.com](mailto:info@australiansforpalestine.com)

January 2009